

# 885AB Cantilever Umbrella Assembly Instructions

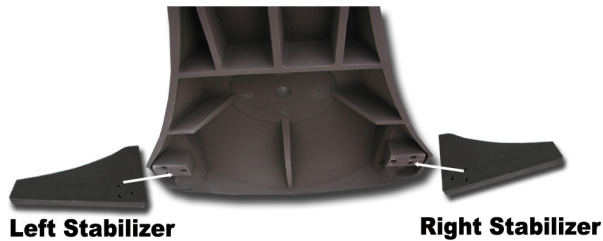
**Caution: This umbrella requires a two person assembly. Caution should be used when moving or assembling this umbrella.**

**Umbrella should never be left in the "open" position while not in use. Lower and secure umbrella in windy conditions.**

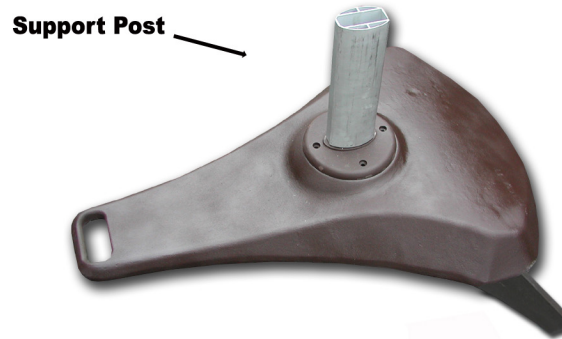
**Step 1. Open Cartons:** base and umbrella ship in two cartons.



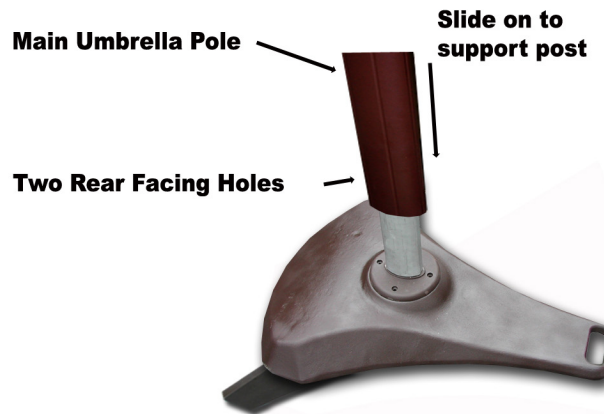
**Step 2. Install Stabilizers:** Use provided screws to secure stabilizers on to rear of the umbrella base. Stabilizers will provide added stability to umbrella.



**Step 3. Install Support Post:** Use provided screws to secure the main pole support post on to the base. Make sure two holes are facing to the rear so main pole can attach to support post.



**Step 4. Attach Main Pole On To Support Post:** Slide main umbrella pole over the support post with the two holes facing the rear of the umbrella.



**Step 5. Secure Main Pole:** Using the two screws provided, secure the main pole on to the support post at the lower rear of the main pole.



## Parts List

1. Umbrella Frame - 1
2. Support Post - 1
3. Umbrella Base - 1
4. Stabilizer Bars - 2
5. Finial Top - 1
6. Stabilizer Screws - 6
7. Support Post Screws - 4
8. Main Pole Support Screws - 2
9. Base Foot (attached) - 1

**Note: This umbrella must be secured on a level surface utilizing the supplied stabilizer support arms. Secure umbrella shut with the canopy ties when umbrella is in the "closed" position.**

## Warranty

Galtech International warrants this product for a period of one year from original date of purchase. Damage as a result of wind or natural causes are not covered under warranty. Broken ribs are not warranted as that is indicative of wind damage. Sunbrella fabric is warranted against fading for a period of three years.

All warranty claims must be submitted to the dealer where the product was purchased. A copy of the original receipt is required to validate any warranty claim. All warranty claims are subject to factory discretion.